

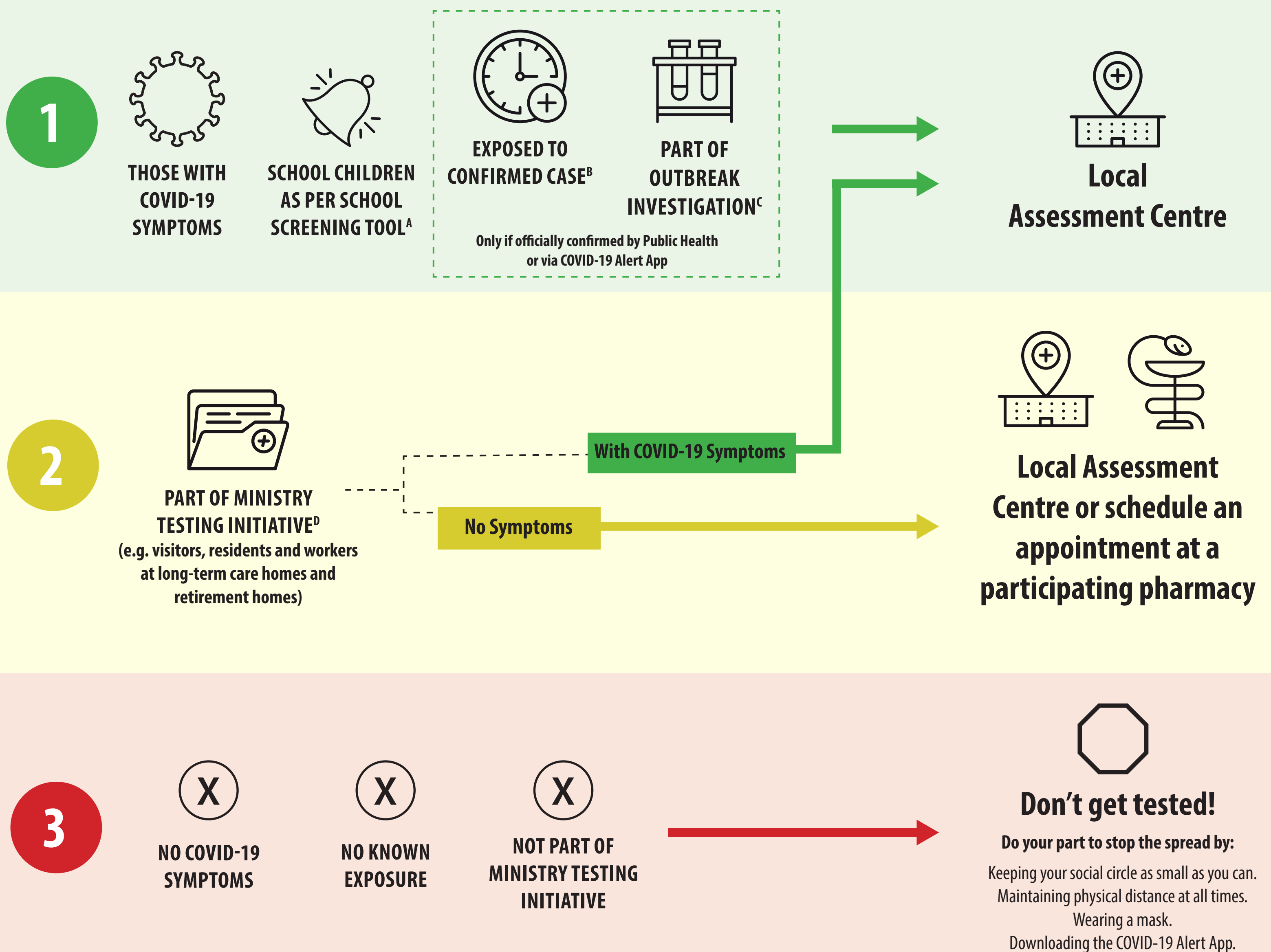
# WHY WE TEST FOR COVID-19 AND WHERE TO GO

## WHY WE TEST

To protect the most vulnerable and ensure we keep schools, businesses, long-term care homes and other vital services open. To achieve this, we must prioritize testing so we can find positive cases and trace their contacts in the fastest way possible. The more time spent on low priority testing, the harder it is to stop the spread of disease.

## WHO WE PRIORITIZE

## WHERE TO GO



A. [covid-19.ontario.ca/school-screening](https://covid-19.ontario.ca/school-screening)  
 B. Exposure confirmed by public health or COVID Alert App  
 C. A resident, student or employee in a setting that has a COVID-19 outbreak, as identified and informed by your local public health unit  
 D. Includes residents, workers and visitors in long-term care homes and retirement homes, residents or workers in homeless shelters, international students that have passed their 14 day quarantine period, farm workers, Indigenous communities and other specific populations as outlined in guidance from the Chief Medical Officer of Health.

You can find assessment centres here:  
<https://covid-19.ontario.ca/assessment-centre-locations/>

This visual is based on the following document  
[http://health.gov.on.ca/en/pro/programs/publichealth/coronavirus/docs/2019\\_testing\\_guidance.pdf](http://health.gov.on.ca/en/pro/programs/publichealth/coronavirus/docs/2019_testing_guidance.pdf)  
 as of October 1, 2020



SCAN FOR THE  
 COVID-19 ALERT APP